

Can the Compelling Power of Virtual Education Assist in Reducing Cancer Care Disparities, Particularly in Clinical Trial Participation?

Friday, November 11, 2022

6:45 PM – 7:45 PM ET

Faculty

Shaachi Gupta, MD, MPH

Zanetta S Lamar, MD

Estelamari Rodriguez, MD, MPH

Moderator

Neil Love, MD

Commercial Support

This activity is supported by an educational grant from Astellas.

Research To Practice CME Planning Committee Members, Staff and Reviewers

Planners, scientific staff and independent reviewers for Research To Practice have no relevant conflicts of interest to disclose.

Dr Love — Disclosures

Dr Love is president and CEO of Research To Practice. Research To Practice receives funds in the form of educational grants to develop CME activities from the following companies: AbbVie Inc, Adaptive Biotechnologies Corporation, ADC Therapeutics, Agios Pharmaceuticals Inc, Alexion Pharmaceuticals, Amgen Inc, Array BioPharma Inc, a subsidiary of Pfizer Inc, Astellas, AstraZeneca Pharmaceuticals LP, Aveo Pharmaceuticals, Bayer HealthCare Pharmaceuticals, BeiGene Ltd, BeyondSpring Pharmaceuticals Inc, Blueprint Medicines, Boehringer Ingelheim Pharmaceuticals Inc, Bristol-Myers Squibb Company, Celgene Corporation, Clovis Oncology, Coherus BioSciences, CTI BioPharma Corp, Daiichi Sankyo Inc, Eisai Inc, Elevation Oncology Inc, EMD Serono Inc, Epizyme Inc, Exact Sciences Corporation, Exelixis Inc, Five Prime Therapeutics Inc, Foundation Medicine, G1 Therapeutics Inc, Genentech, a member of the Roche Group, Genmab, Gilead Sciences Inc, GlaxoSmithKline, Grail Inc, Halozyme Inc, Helsinn Healthcare SA, ImmunoGen Inc, Incyte Corporation, Ipsen Biopharmaceuticals Inc, Janssen Biotech Inc, administered by Janssen Scientific Affairs LLC, Jazz Pharmaceuticals Inc, Karyopharm Therapeutics, Kite, A Gilead Company, Kronos Bio Inc, Lilly, Loxo Oncology Inc, a wholly owned subsidiary of Eli Lilly & Company, MEI Pharma Inc, Merck, Mersana Therapeutics Inc, Mirati Therapeutics Inc, Natera Inc, Novartis, Novartis Pharmaceuticals Corporation on behalf of Advanced Accelerator Applications, Novocure Inc, Oncopeptides, Pfizer Inc, Pharmacyclics LLC, an AbbVie Company, Puma Biotechnology Inc, Regeneron Pharmaceuticals Inc, Sanofi, Seagen Inc, Servier Pharmaceuticals LLC, Sumitomo Dainippon Pharma Oncology Inc, Taiho Oncology Inc, Takeda Pharmaceuticals USA Inc, TerSera Therapeutics LLC, Tesaro, A GSK Company, TG Therapeutics Inc, Turning Point Therapeutics Inc, Verastem Inc and Zymeworks Inc.

Dr Gupta — Disclosures

Advisory Committee	Novartis, Puma Biotechnology Inc
---------------------------	----------------------------------

Dr Lamar — Disclosures

No relevant conflicts of interest to disclose

Dr Rodriguez — Disclosures

Advisory Committee	AstraZeneca Pharmaceuticals LP, Eisai Inc, Genentech, a member of the Roche Group, Lilly, Novartis, Novocure Inc, Regeneron Pharmaceuticals Inc
Consulting Agreements	Janssen Biotech Inc, Pfizer Inc

ONCOLOGY TODAY

WITH DR NEIL LOVE



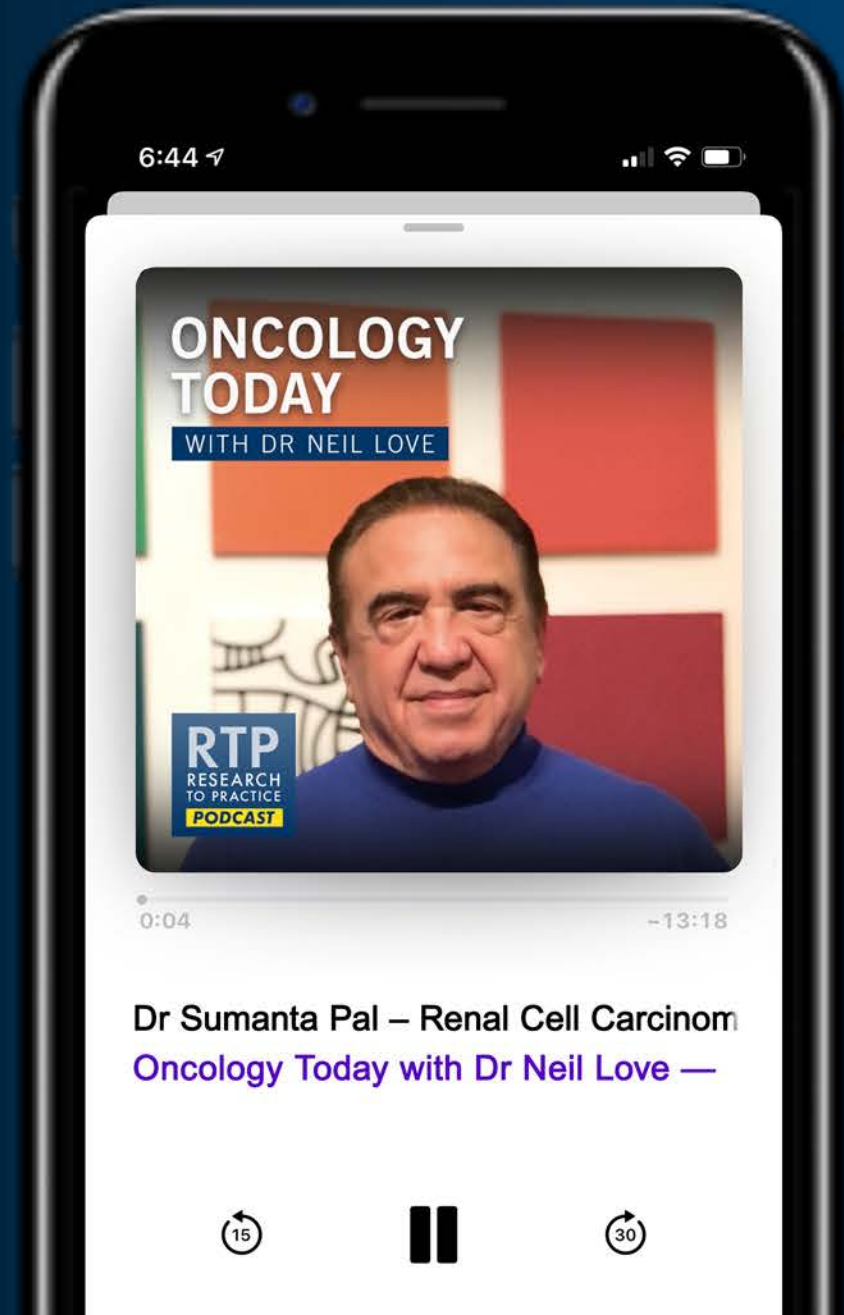
Listen on
Apple Podcasts



Spotify



Listen on
Google Podcasts



What Clinicians Want to Know: Addressing Current Questions and Controversies in the Management of HER2-Positive Breast Cancer

Part 1 of a 2-Part CME Satellite Symposium Series Held in Conjunction with the 2022 San Antonio Breast Cancer Symposium®

Wednesday, December 7, 2022

7:15 PM – 9:15 PM CT (8:15 PM – 10:15 PM ET)

Faculty

Erika Hamilton, MD

Sara A Hurvitz, MD

Ian E Krop, MD, PhD

Shanu Modi, MD

Sara M Tolaney, MD, MPH

Moderator

Neil Love, MD

What Clinicians Want to Know: Addressing Current Questions and Controversies in the Management of ER-Positive Breast Cancer

Part 2 of a 2-Part CME Satellite Symposium Series Held in Conjunction with the 2022 San Antonio Breast Cancer Symposium®

Thursday, December 8, 2022

7:15 PM – 9:15 PM CT (8:15 PM – 10:15 PM ET)

Faculty

Aditya Bardia, MD, MPH

Matthew P Goetz, MD

Virginia Kaklamani, MD, DSc

Kevin Kalinsky, MD, MS

Hope S Rugo, MD

Moderator

Neil Love, MD

Addressing Current Questions and Controversies in the Management of Chronic Lymphocytic Leukemia — What Clinicians Want to Know

*Part 1 of a 3-Part CME Friday Satellite Symposium and Virtual Event Series
Preceding the 64th ASH Annual Meeting*

Friday, December 9, 2022

11:30 AM – 1:30 PM CT (12:30 PM – 2:30 PM ET)

Faculty

Alexey V Danilov, MD, PhD

Matthew S Davids, MD, MMSc

Professor Dr Arnon P Kater, MD, PhD

Lindsey Roeker, MD

Philip A Thompson, MB, BS

Moderator

Neil Love, MD

Addressing Current Questions and Controversies in the Management of Hodgkin and Non-Hodgkin Lymphoma — What Clinicians Want to Know

*Part 2 of a 3-Part CME Friday Satellite Symposium and Virtual Event Series
Preceding the 64th ASH Annual Meeting*

Friday, December 9, 2022

3:15 PM – 5:15 PM CT (4:15 PM – 6:15 PM ET)

Faculty

Jonathan W Friedberg, MD, MMSc

Brad S Kahl, MD

David G Maloney, MD, PhD

Loretta J Nastoupil, MD

Sonali M Smith, MD

Moderator

Neil Love, MD

Addressing Current Questions and Controversies in the Management of Multiple Myeloma — What Clinicians Want to Know

*Part 3 of a 3-Part CME Friday Satellite Symposium and Virtual Event Series
Preceding the 64th ASH Annual Meeting*

Friday, December 9, 2022

7:00 PM – 9:00 PM CT (8:00 PM – 10:00 PM ET)

Faculty

Jesús G Berdeja, MD
Rafael Fonseca, MD
Sagar Lonial, MD

Robert Z Orlowski, MD, PhD
Noopur Raje, MD

Moderator

Neil Love, MD

Can the Compelling Power of Virtual Education Assist in Reducing Cancer Care Disparities, Particularly in Clinical Trial Participation?

Friday, November 11, 2022

6:45 PM – 7:45 PM ET

Faculty

Shaachi Gupta, MD, MPH

Zanetta S Lamar, MD

Estelamari Rodriguez, MD, MPH

Moderator

Neil Love, MD

Thank you for joining us!

*For CME credit, please fill out your CME Credit Form
handout and return it to RTP staff as you leave.*

Can the Compelling Power of Virtual Education Assist in Reducing Cancer Care Disparities, Particularly in Clinical Trial Participation?

Friday, November 11, 2022

6:45 PM – 7:45 PM ET

Faculty

Shaachi Gupta, MD, MPH

Zanetta S Lamar, MD

Estelamari Rodriguez, MD, MPH

Moderator

Neil Love, MD

Participating Faculty



Shaachi Gupta, MD, MPH
Medical Oncologist/Hematologist
Florida Cancer Specialists and
Research Institute
Lake Worth, Florida



Estelamari Rodriguez, MD, MPH
Clinical Research Lead
Thoracic Site Disease Group
Associate Director, Community Outreach
Sylvester Comprehensive Cancer Center
University of Miami Miller School of Medicine
Miami, Florida



Zanetta S Lamar, MD
Florida Cancer Specialists
and Research Institute
Naples, Florida



MODERATOR
Neil Love, MD
Research To Practice

Dr Love — Disclosures

Dr Love is president and CEO of Research To Practice. Research To Practice receives funds in the form of educational grants to develop CME activities from the following companies: AbbVie Inc, Adaptive Biotechnologies Corporation, ADC Therapeutics, Agios Pharmaceuticals Inc, Alexion Pharmaceuticals, Amgen Inc, Array BioPharma Inc, a subsidiary of Pfizer Inc, Astellas, AstraZeneca Pharmaceuticals LP, Aveo Pharmaceuticals, Bayer HealthCare Pharmaceuticals, BeiGene Ltd, BeyondSpring Pharmaceuticals Inc, Blueprint Medicines, Boehringer Ingelheim Pharmaceuticals Inc, Bristol-Myers Squibb Company, Celgene Corporation, Clovis Oncology, Coherus BioSciences, CTI BioPharma Corp, Daiichi Sankyo Inc, Eisai Inc, Elevation Oncology Inc, EMD Serono Inc, Epizyme Inc, Exact Sciences Corporation, Exelixis Inc, Five Prime Therapeutics Inc, Foundation Medicine, G1 Therapeutics Inc, Genentech, a member of the Roche Group, Genmab, Gilead Sciences Inc, GlaxoSmithKline, Grail Inc, Halozyme Inc, Helsinn Healthcare SA, ImmunoGen Inc, Incyte Corporation, Ipsen Biopharmaceuticals Inc, Janssen Biotech Inc, administered by Janssen Scientific Affairs LLC, Jazz Pharmaceuticals Inc, Karyopharm Therapeutics, Kite, A Gilead Company, Kronos Bio Inc, Lilly, Loxo Oncology Inc, a wholly owned subsidiary of Eli Lilly & Company, MEI Pharma Inc, Merck, Mersana Therapeutics Inc, Mirati Therapeutics Inc, Natera Inc, Novartis, Novartis Pharmaceuticals Corporation on behalf of Advanced Accelerator Applications, Novocure Inc, Oncopeptides, Pfizer Inc, Pharmacyclics LLC, an AbbVie Company, Puma Biotechnology Inc, Regeneron Pharmaceuticals Inc, Sanofi, Seagen Inc, Servier Pharmaceuticals LLC, Sumitomo Dainippon Pharma Oncology Inc, Taiho Oncology Inc, Takeda Pharmaceuticals USA Inc, TerSera Therapeutics LLC, Tesaro, A GSK Company, TG Therapeutics Inc, Turning Point Therapeutics Inc, Verastem Inc and Zymeworks Inc.

Commercial Support

This activity is supported by an educational grant from Astellas.

Research To Practice CME Planning Committee Members, Staff and Reviewers

Planners, scientific staff and independent reviewers for Research To Practice have no relevant conflicts of interest to disclose.

ONCOLOGY TODAY

WITH DR NEIL LOVE



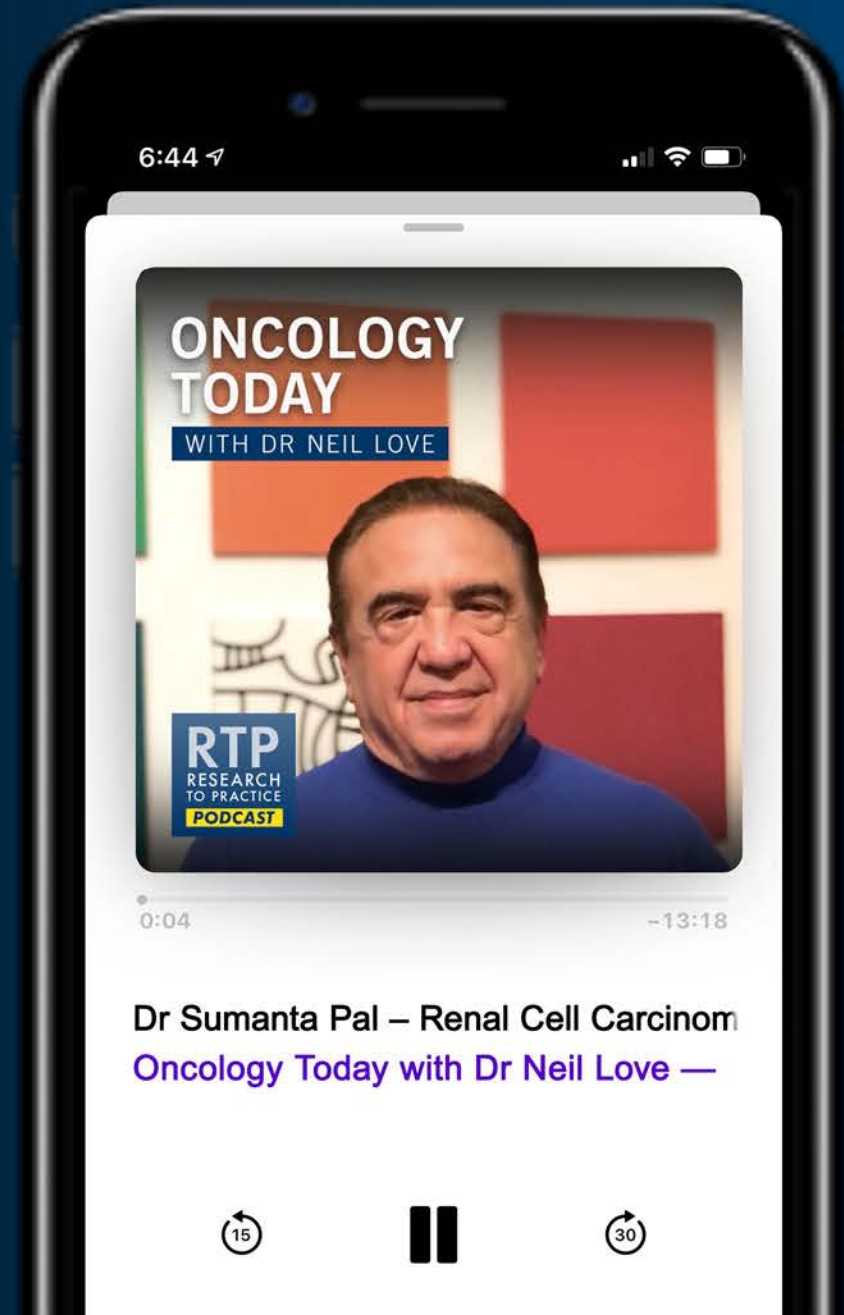
Listen on
Apple Podcasts



Spotify



Listen on
Google Podcasts



What Clinicians Want to Know: Addressing Current Questions and Controversies in the Management of HER2-Positive Breast Cancer

Part 1 of a 2-Part CME Satellite Symposium Series Held in Conjunction with the 2022 San Antonio Breast Cancer Symposium®

Wednesday, December 7, 2022

7:15 PM – 9:15 PM CT (8:15 PM – 10:15 PM ET)

Faculty

Erika Hamilton, MD

Sara A Hurvitz, MD

Ian E Krop, MD, PhD

Shanu Modi, MD

Sara M Tolaney, MD, MPH

Moderator

Neil Love, MD

What Clinicians Want to Know: Addressing Current Questions and Controversies in the Management of ER-Positive Breast Cancer

Part 2 of a 2-Part CME Satellite Symposium Series Held in Conjunction with the 2022 San Antonio Breast Cancer Symposium®

Thursday, December 8, 2022

7:15 PM – 9:15 PM CT (8:15 PM – 10:15 PM ET)

Faculty

Aditya Bardia, MD, MPH

Matthew P Goetz, MD

Virginia Kaklamani, MD, DSc

Kevin Kalinsky, MD, MS

Hope S Rugo, MD

Moderator

Neil Love, MD

Addressing Current Questions and Controversies in the Management of Chronic Lymphocytic Leukemia — What Clinicians Want to Know

*Part 1 of a 3-Part CME Friday Satellite Symposium and Virtual Event Series
Preceding the 64th ASH Annual Meeting*

Friday, December 9, 2022

11:30 AM – 1:30 PM CT (12:30 PM – 2:30 PM ET)

Faculty

Alexey V Danilov, MD, PhD

Matthew S Davids, MD, MMSc

Professor Dr Arnon P Kater, MD, PhD

Lindsey Roeker, MD

Philip A Thompson, MB, BS

Moderator

Neil Love, MD

Addressing Current Questions and Controversies in the Management of Hodgkin and Non-Hodgkin Lymphoma — What Clinicians Want to Know

*Part 2 of a 3-Part CME Friday Satellite Symposium and Virtual Event Series
Preceding the 64th ASH Annual Meeting*

Friday, December 9, 2022

3:15 PM – 5:15 PM CT (4:15 PM – 6:15 PM ET)

Faculty

Jonathan W Friedberg, MD, MMSc

Brad S Kahl, MD

David G Maloney, MD, PhD

Loretta J Nastoupil, MD

Sonali M Smith, MD

Moderator

Neil Love, MD

Addressing Current Questions and Controversies in the Management of Multiple Myeloma — What Clinicians Want to Know

*Part 3 of a 3-Part CME Friday Satellite Symposium and Virtual Event Series
Preceding the 64th ASH Annual Meeting*

Friday, December 9, 2022

7:00 PM – 9:00 PM CT (8:00 PM – 10:00 PM ET)

Faculty

Jesús G Berdeja, MD
Rafael Fonseca, MD
Sagar Lonial, MD

Robert Z Orlowski, MD, PhD
Noopur Raje, MD

Moderator

Neil Love, MD

Can the Compelling Power of Virtual Education Assist in Reducing Cancer Care Disparities, Particularly in Clinical Trial Participation?

Friday, November 11, 2022

6:45 PM – 7:45 PM ET

Faculty

Shaachi Gupta, MD, MPH

Zanetta S Lamar, MD

Estelamari Rodriguez, MD, MPH

Moderator

Neil Love, MD

Contributing Oncologists



Laila Agrawal, MD
Norton Cancer Institute
Louisville, Kentucky



Warren S Brenner, MD
Lynn Cancer Institute
Boca Raton, Florida



Jesús G Berdeja, MD
Tennessee Oncology
Nashville, Tennessee



Gigi Chen, MD
John Muir Health
Pleasant Hill, California



Bhavana (Tina) Bhatnagar, DO
WVU Cancer Institute
Schiffler Cancer Center
Wheeling, West Virginia



Shaachi Gupta, MD, MPH
Florida Cancer Specialists
Lake Worth, Florida

Contributing Oncologists (Continued)



Gurveen Kaur, MD
WVU Medicine Wheeling Hospital
Wheeling, West Virginia



Ruben A Mesa, MD
Mays Cancer Center
San Antonio, Texas



Zanetta S Lamar, MD
Florida Cancer Specialists
Naples, Florida



Priya Rudolph, MD, PhD
Georgia Cancer Specialists
Athens, Georgia



Rajalaxmi McKenna, MD
Southwest Medical
Consultants SC
Willowbrook, Illinois



Namrata I Peswani, MD
UT Southwestern Medical Center
Harold C Simmons Comprehensive
Cancer Center
Richardson, Texas

Agenda

▶ “Hormonal manipulation for the 1980s”

▶ Cases: CML, lung cancer

- 42-year-old man who presents with chronic myelogenous leukemia ... in 2004
- 79-year-old woman with metastatic adenocarcinoma of the lung and a MET exon 14 skipping mutation

▶ Cases: Breast and prostate cancer

- 45-year-old premenopausal woman with ER/PR+, HER2-low (IHC 1+) metastatic breast cancer with disease progression on ovarian suppression, anastrozole and abemaciclib (PIK3CA WT)
- 49-year-old man with de novo metastatic prostate cancer

Agenda (Continued)

▶ **Cases: CLL, AML**

- 80-year-old man with chronic lymphocytic leukemia who requires treatment
- 77-year-old woman with acute myeloid leukemia on decitabine/venetoclax

▶ **Cases: Multiple myeloma**

- 75-year-old man on a clinical trial of the anti-BCMA bispecific antibody teclistamab

▶ **Patient care and clinical trial accrual when there is a language/culture barrier**

▶ **General medical oncologists reflect on post-COVID-19 virtual platforms**

▶ **Hybrid meetings**

American Oncology Network (AON) annual meeting/“Hologram” meeting moderator

▶ **Pilot project: “What I tell my patients”**

Collaborative decision-making; advantages of clinical research

Agenda

▶ “Hormonal manipulation for the 1980s”

▶ **Cases: CML, lung cancer**

- 42-year-old man who presents with chronic myelogenous leukemia ... in 2004
- 79-year-old woman with metastatic adenocarcinoma of the lung and a MET exon 14 skipping mutation

▶ **Cases: Breast and prostate cancer**

- 45-year-old premenopausal woman with ER/PR+, HER2-low (IHC 1+) metastatic breast cancer with disease progression on ovarian suppression, anastrozole and abemaciclib (PIK3CA WT)
- 49-year-old man with de novo metastatic prostate cancer

**HORMONAL
MANIPULATION
FOR THE 1980's**

***Produced by
Neil Love, M.D.***

Agenda

▶ “Hormonal manipulation for the 1980s”

▶ Cases: CML, lung cancer

- 42-year-old man who presents with chronic myelogenous leukemia ... in 2004
- 79-year-old woman with metastatic adenocarcinoma of the lung and a MET exon 14 skipping mutation

▶ Cases: Breast and prostate cancer

- 45-year-old premenopausal woman with ER/PR+, HER2-low (IHC 1+) metastatic breast cancer with disease progression on ovarian suppression, anastrozole and abemaciclib (PIK3CA WT)
- 49-year-old man with de novo metastatic prostate cancer



Dr Rajalaxmi McKenna
Willowbrook, Illinois

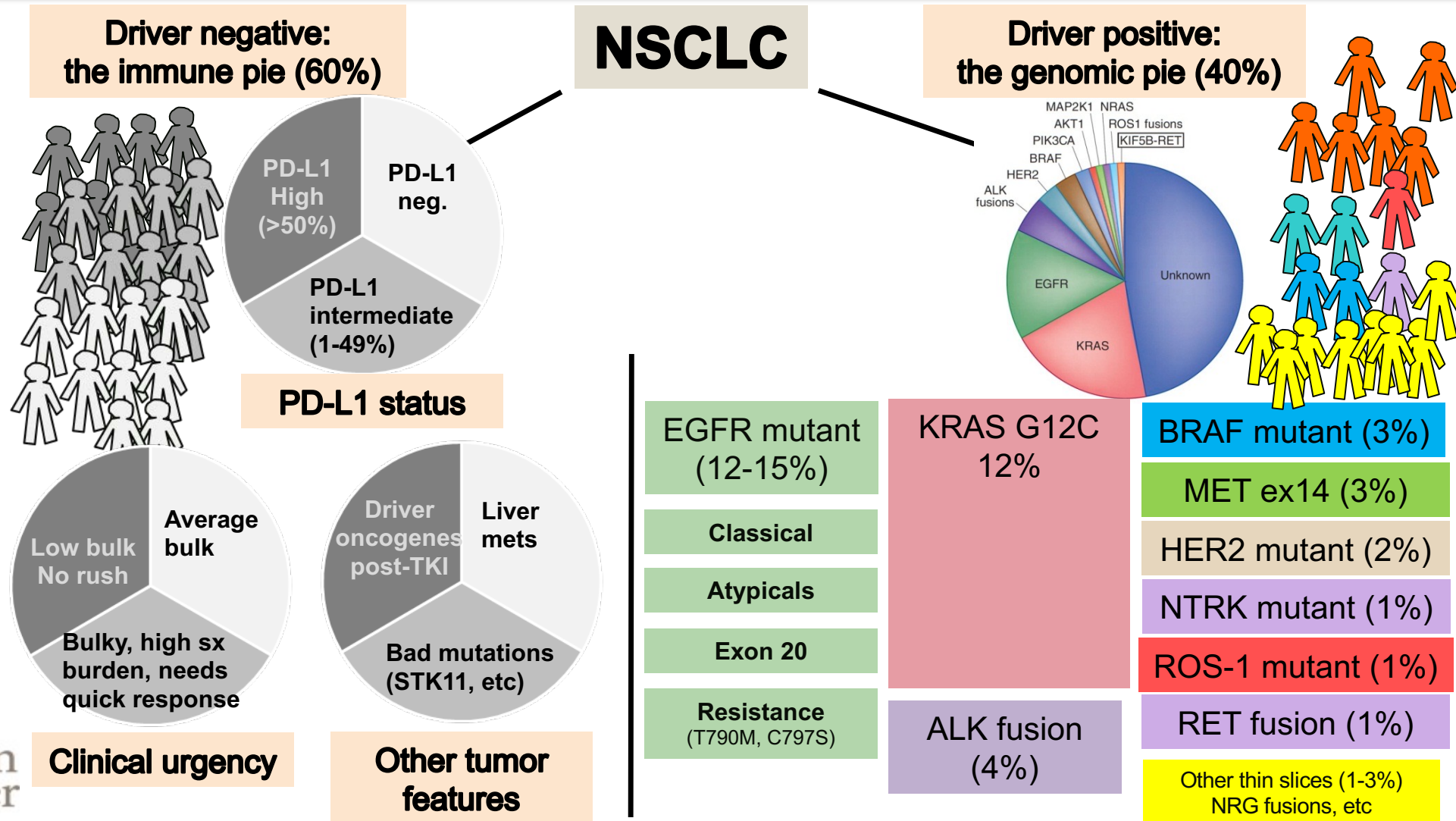
**42-year-old man with chronic myeloid leukemia
and osteopenia after long-term imatinib therapy**



Dr Gigi Chen
Pleasant Hill, California

**79-year-old woman with metastatic lung
adenocarcinoma with a MET exon 14
mutation who has toxicity with capmatinib**

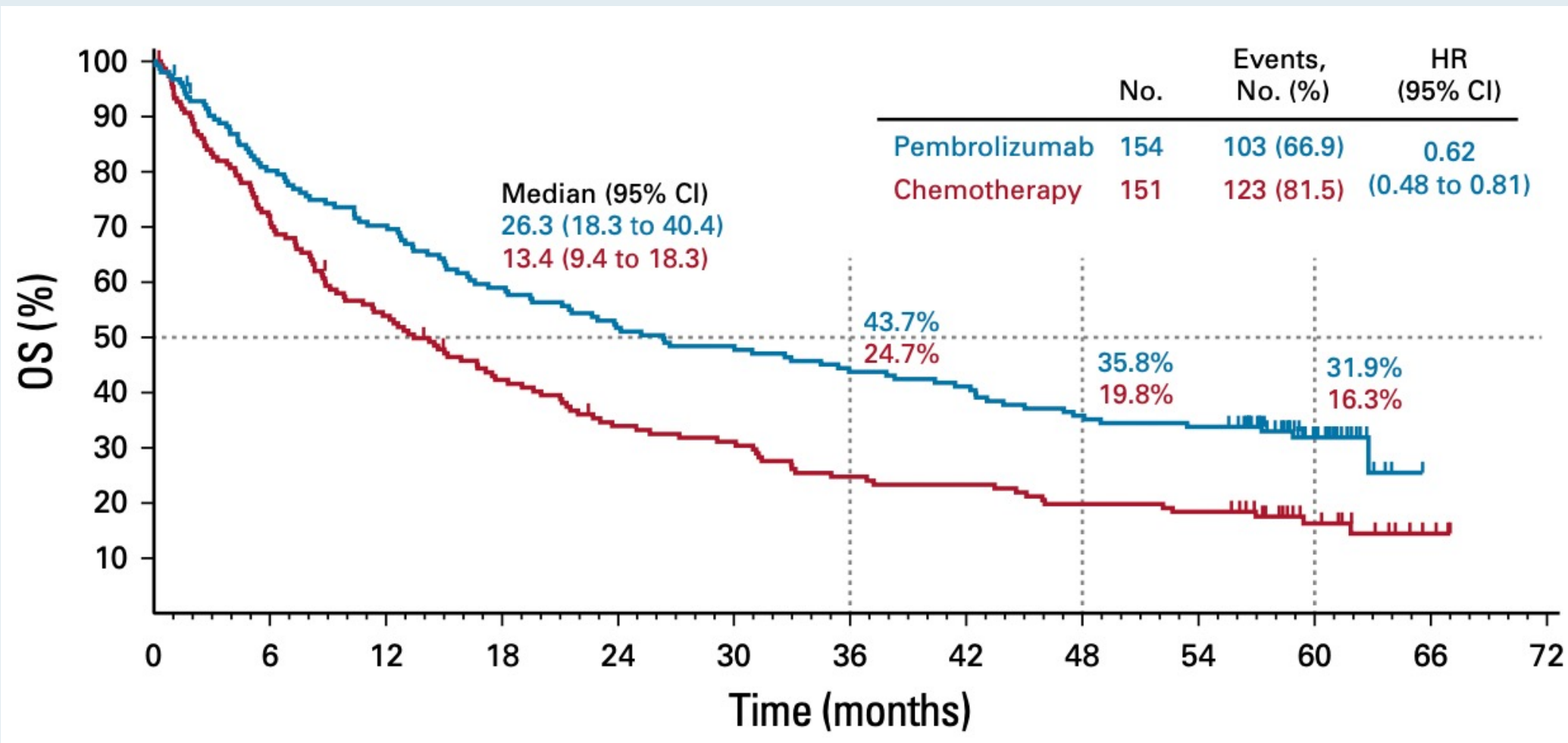
NSCLC 2022: Precision therapy for driver oncogenes, but immunotherapy based on PD-L1, and subjective “clinical factors”



Timeline of Select Immunotherapy Approvals in Non-Small Cell Lung Cancer (NSCLC)

March 4, 2015	Nivolumab approved for second-line treatment of metastatic NSCLC
October 2, 2015	Pembrolizumab approved for second-line treatment of metastatic NSCLC (PD-L1-positive)
October 1, 2016	Pembrolizumab approved for first-line treatment of metastatic NSCLC (PD-L1 \geq 50%)
May 1, 2017	Pembrolizumab in combination with chemotherapy receives accelerated approval for first-line treatment of metastatic NSCLC
August 20, 2018	Pembrolizumab in combination with chemotherapy approved for first-line treatment of metastatic NSCLC

KEYNOTE-024: 5-Year OS Update with Pembrolizumab Monotherapy for PD-L1 $\geq 50\%$



Agenda

▶ “Hormonal manipulation for the 1980s”

▶ Cases: CML, lung cancer

- 42-year-old man who presents with chronic myelogenous leukemia ... in 2004
- 79-year-old woman with metastatic adenocarcinoma of the lung and a MET exon 14 skipping mutation

▶ Cases: Breast and prostate cancer

- 45-year-old premenopausal woman with ER/PR+, HER2-low (IHC 1+) metastatic breast cancer with disease progression on ovarian suppression, anastrozole and abemaciclib (PIK3CA WT)
- 49-year-old man with de novo metastatic prostate cancer



Dr Laila Agrawal
Louisville, Kentucky

45-year-old woman with ER/PR-positive, HER2-low (IHC 1+) metastatic breast cancer who experiences PD after abemaciclib/OFS and an AI



Dr Gurveen Kaur
Wheeling, West Virginia

49-year-old man with multiple medical comorbidities who presents with de novo mHSPC (PSA 19.4) and responds to ADT/docetaxel



**Trastuzumab deruxtecan (T-DXd)
vs treatment of physician's choice in patients with
HER2-low unresectable and/or metastatic breast cancer:
Results of DESTINY-Breast04, a randomized, phase 3 study**

Shanu Modi Memorial Sloan Kettering Cancer Center, Memorial Hospital, New York, NY, USA

June 5, 2022

Additional authors: William Jacot, Toshinari Yamashita, Joo Hyuk Sohn, Maria Vidal, Eriko Tokunaga, Junji Tsurutani, Naoto Ueno, Yee Soo Chae, Keun Seok Lee, Naoki Niikura, Yeon Hee Park, Xiaojia Wang, Binghe Xu, Dhiraj Gambhire, Lotus Yung, Gerold Meinhardt, Yibin Wang, Nadia Harbeck, David Cameron

On behalf of the DESTINY-Breast04 investigators

ORIGINAL ARTICLE

**Trastuzumab Deruxtecan in Previously
Treated HER2-Low Advanced Breast Cancer**

S. Modi, W. Jacot, T. Yamashita, J. Sohn, M. Vidal, E. Tokunaga, J. Tsurutani, N.T. Ueno, A. Prat, Y.S. Chae, K.S. Lee, N. Niikura, Y.H. Park, B. Xu, X. Wang, M. Gil-Gil, W. Li, J.-Y. Pierga, S.-A. Im, H.C.F. Moore, H.S. Rugo, R. Yerushalmi, F. Zagouri, A. Gombos, S.-B. Kim, Q. Liu, T. Luo, C. Saura, P. Schmid, T. Sun, D. Gambhire, L. Yung, Y. Wang, J. Singh, P. Vitazka, G. Meinhardt, N. Harbeck, and D.A. Cameron, for the DESTINY-Breast04 Trial Investigators*

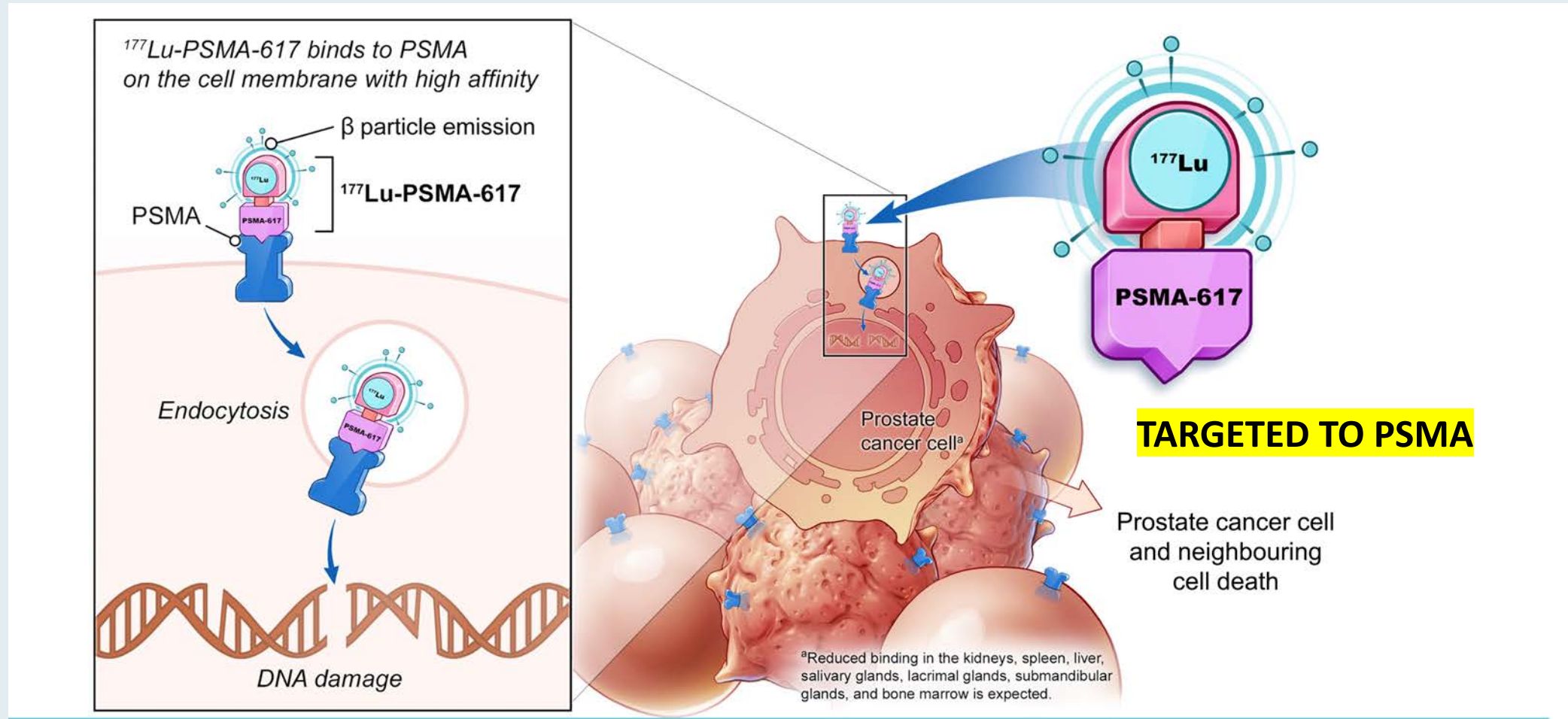
EDITORIALS



DESTINY-Changing Results for Advanced Breast Cancer

Sara A. Hurvitz, M.D.

^{177}Lu -PSMA-617: Mechanism of Action



Agenda (Continued)



Cases: CLL, AML

- 80-year-old man with chronic lymphocytic leukemia who requires treatment
- 77-year-old woman with acute myeloid leukemia on decitabine/venetoclax



Cases: Multiple myeloma

- 75-year-old man on a clinical trial of the anti-BCMA bispecific antibody teclistamab



Patient care and clinical trial accrual when there is a language/culture barrier



General medical oncologists reflect on post-COVID-19 virtual platforms



Hybrid meetings

American Oncology Network (AON) annual meeting/“Hologram” meeting moderator



Pilot project: “What I tell my patients”

Collaborative decision-making; advantages of clinical research



Dr Namrata Peswani
Richardson, Texas

**80-year-old man with newly diagnosed
del(13q) chronic lymphocytic leukemia and life-
threatening anemia**



Dr Tina Bhatnagar
Wheeling, West Virginia

**77-year-old woman who received
decitabine/venetoclax for acute myeloid
leukemia**

Regulatory and reimbursement issues aside, what would be your preferred initial regimen for a 60-year-old patient with CLL with IGHV mutation but no del(17p) or TP53 mutation who required treatment?



Dr Brown

FCR



Dr Rogers

**Acalabrutinib or
Venetoclax/
obinutuzumab**



Dr Davids

**Venetoclax/
obinutuzumab**



Dr Sharman

**Venetoclax/
obinutuzumab**



Dr Hillmen

**Venetoclax/
obinutuzumab**



Dr Wierda

Venetoclax/ibrutinib



Dr O'Brien

**Venetoclax/
obinutuzumab**

Regulatory and reimbursement issues aside, what would be your preferred initial regimen for a 60-year-old patient with IGHV-mutated CLL without del(17p) or TP53 mutation who requires treatment?



Regulatory and reimbursement issues aside, what would be your preferred initial regimen for a 60-year-old patient with CLL, unmutated IGHV and no del(17p) or TP53 mutation who required treatment?



Dr Brown

**Venetoclax +
obinutuzumab**



Dr Rogers

**Acalabrutinib or
Venetoclax/
obinutuzumab**



Dr Davids

**Venetoclax +
obinutuzumab**



Dr Sharman

**Venetoclax/
obinutuzumab**



Dr Hillmen

Venetoclax/ibrutinib



Dr Wierda

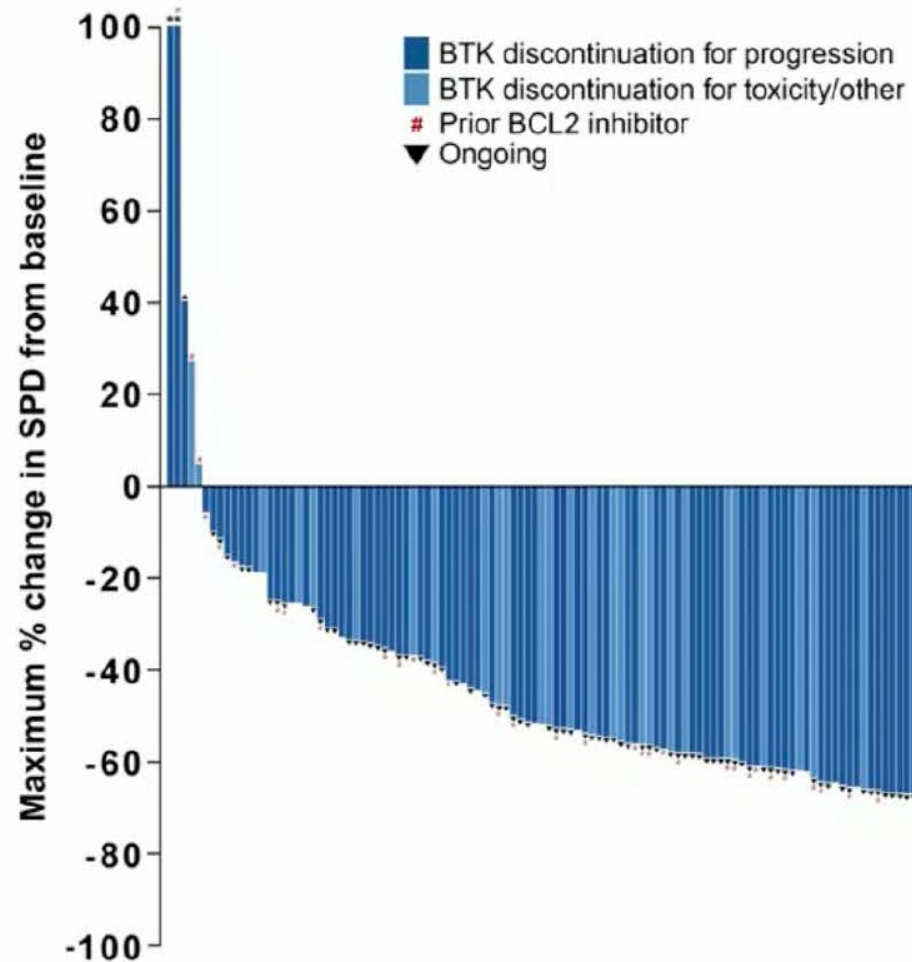
Venetoclax/ibrutinib



Dr O'Brien

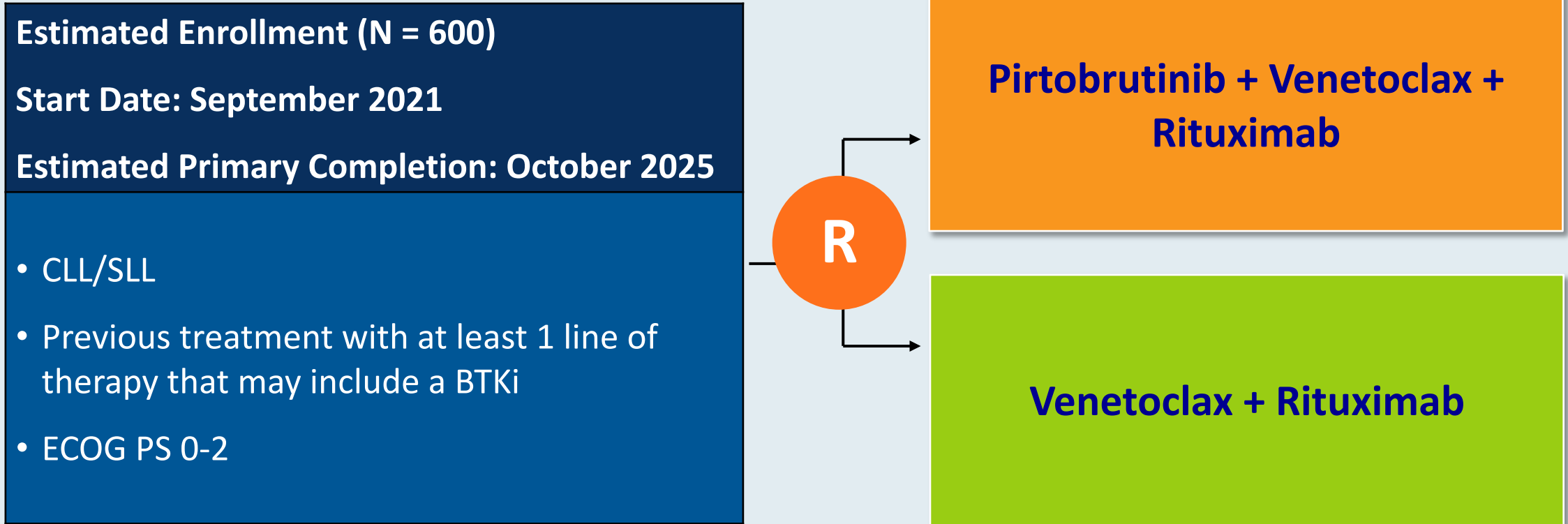
Venetoclax/ibrutinib

BRUIN: Pirtobrutinib Efficacy in BTK-Pretreated CLL/SLL



Efficacy evaluable BTK pre-treated CLL/SLL Patients ^a	n = 252
Overall Response Rate, % (95% CI) ^b	68 (62 – 74)
Best response	
CR, n (%)	2 (1)
PR, n (%)	137 (54)
PR-L, n (%)	32 (13)
SD, n (%)	62 (25)

BRUIN CLL-322 Phase III Trial Design



Primary endpoint: PFS by BIRC

Secondary endpoints: OS, TTNT, EFS, ORR, Time to worsening of CLL/SLL symptoms

Agenda (Continued)

▶ **Cases: CLL, AML**

- 80-year-old man with chronic lymphocytic leukemia who requires treatment
- 77-year-old woman with acute myeloid leukemia on decitabine/venetoclax

▶ **Cases: Multiple myeloma**

- 75-year-old man on a clinical trial of the anti-BCMA bispecific antibody teclistamab

▶ **Patient care and clinical trial accrual when there is a language/culture barrier**

▶ **General medical oncologists reflect on post-COVID-19 virtual platforms**

▶ **Hybrid meetings**

American Oncology Network (AON) annual meeting/“Hologram” meeting moderator

▶ **Pilot project: “What I tell my patients”**

Collaborative decision-making; advantages of clinical research



Dr Jesús Berdeja
Nashville, Tennessee

Administration of bispecific antibodies in the community setting



Clinical trial participation; experience with a bispecific antibody

75-year-old man on a clinical trial of the anti-BCMA bispecific antibody teclistamab

FDA Grants Accelerated Approval for Teclistamab-cqyv for Relapsed or Refractory Multiple Myeloma

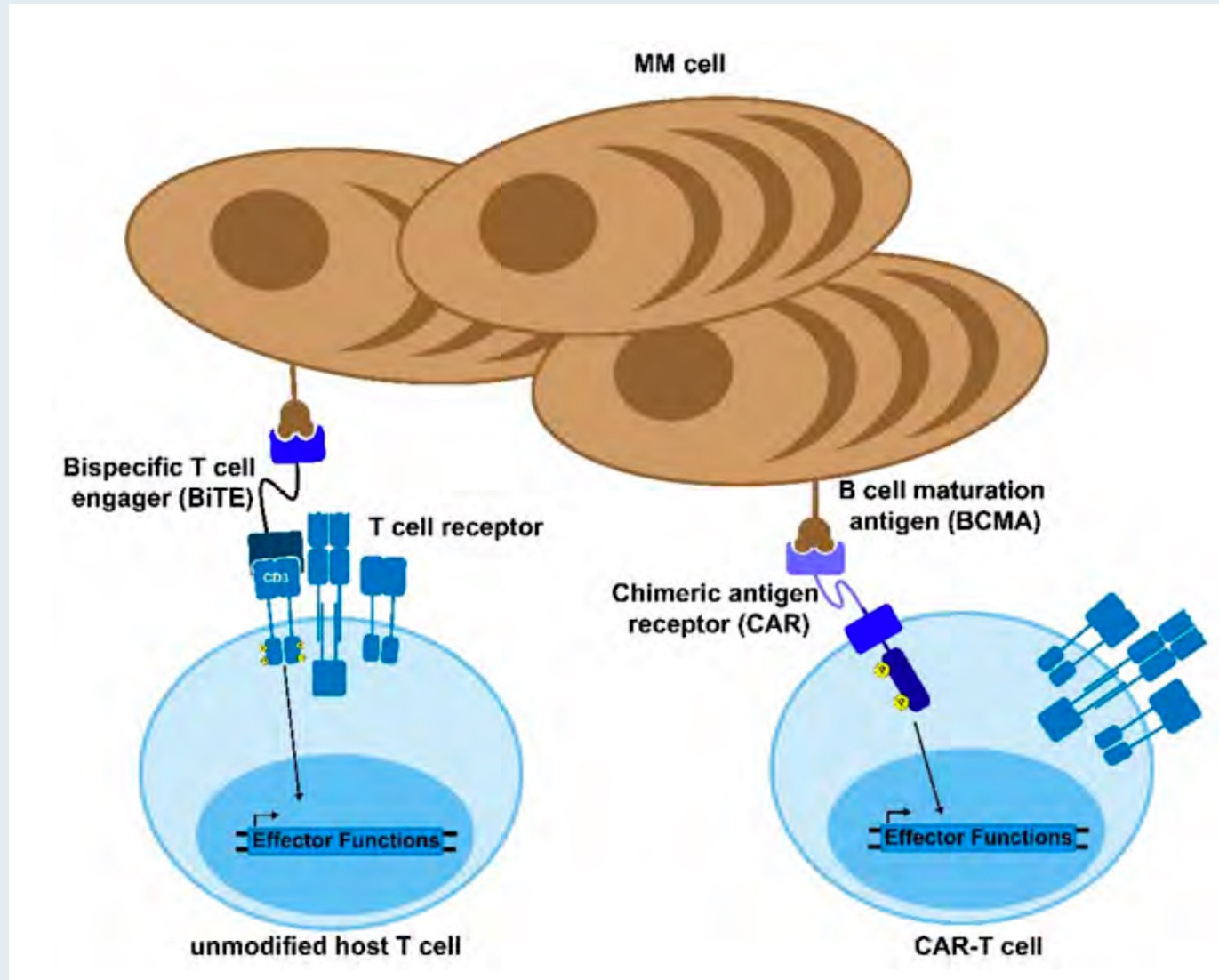
Press Release: October 25, 2022

“On October 25, 2022, the Food and Drug Administration granted accelerated approval to teclistamab-cqyv, the first bispecific B-cell maturation antigen (BCMA)-directed CD3 T-cell engager, for adult patients with relapsed or refractory multiple myeloma who have received at least four prior lines of therapy, including a proteasome inhibitor, an immunomodulatory agent, and an anti-CD38 monoclonal antibody.

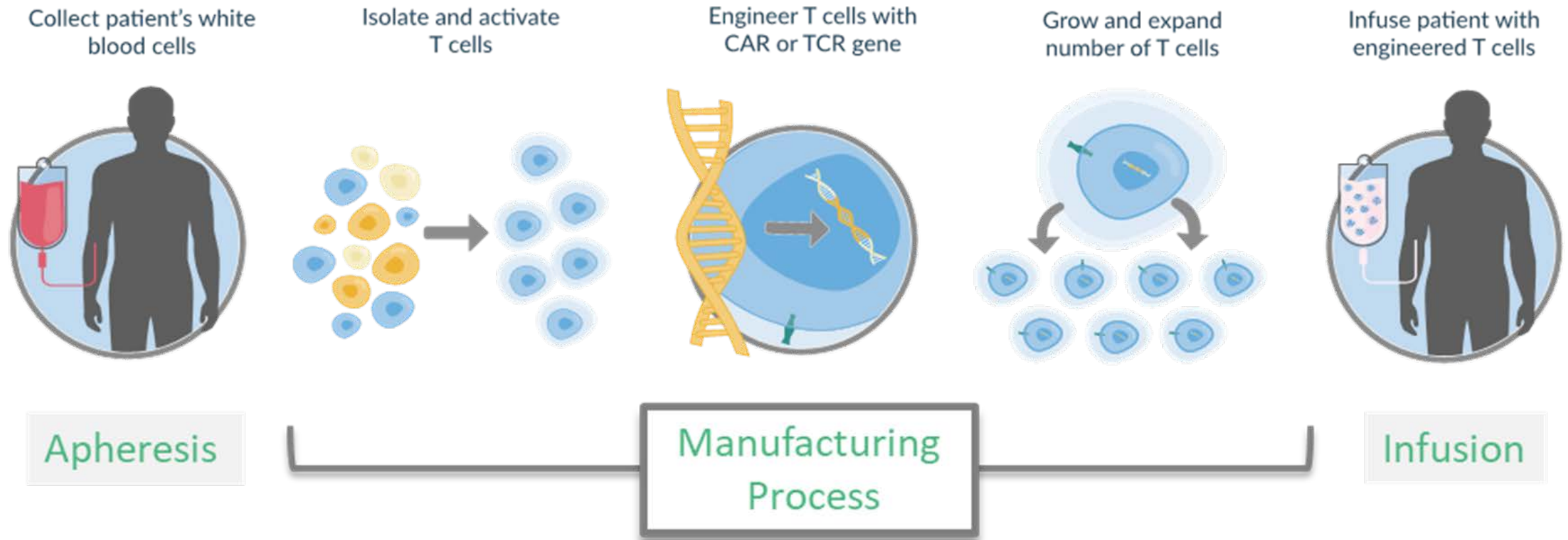
Teclistamab-cqyv was evaluated in MajesTEC-1 (NCT03145181; NCT04557098), a single-arm, multi-cohort, open-label, multi-center study. The efficacy population consisted of 110 patients who had previously received at least 3 prior therapies, including a proteasome inhibitor, an immunomodulatory agent, and an anti-CD38 monoclonal antibody, and had not received prior BCMA-targeted therapy.

The main efficacy outcome measure was overall response rate (ORR) as determined by the Independent Review Committee assessment using International Myeloma Working Group 2016 criteria. ORR was 61.8% (95% CI: 52.1, 70.9). With a median follow-up of 7.4 months among responders, the estimated duration of response (DOR) rate was 90.6% (95% CI: 80.3%, 95.7%) at 6 months and 66.5% (95% CI: 38.8%, 83.9%) at 9 months.”

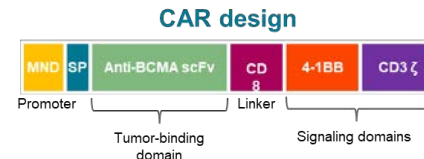
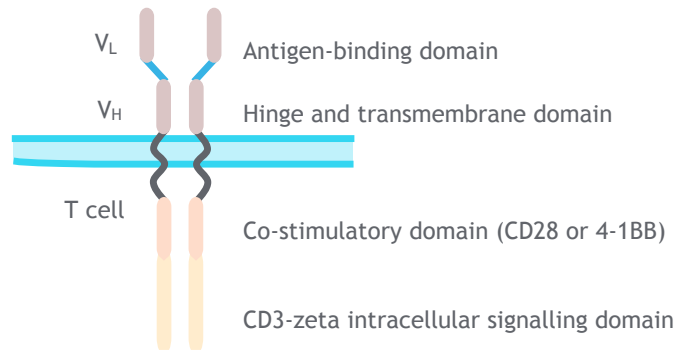
Bispecific Antibodies and CAR T Cells



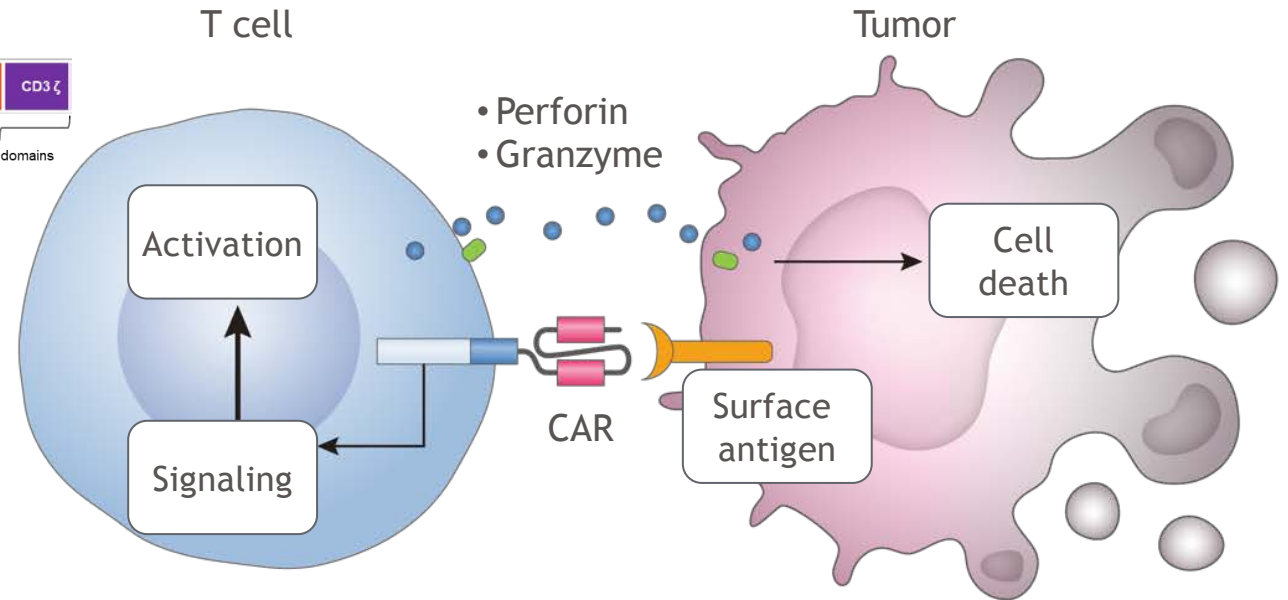
ENGINEERED AUTOLOGOUS CELL THERAPY



Chimeric antigen receptor T cells (CAR T cells) enhance the ability of the immune system to target tumor cells¹



- Exploit native antibody or T cell recognition and signaling pathways¹
- Introduction of unique genes through viral vectors to allow recognition of tumor cells¹
- Dramatic expansion after infusion, and effective tumor cell killing^{1,2}



In MM, several BCMA-targeting CAR T cell therapies are in development.

Images extracted from Shinshu University. Available from: www.Shinshu-u.ac.jp/english/topics/research/shinshu_university_a_1.html. Accessed February 2021.

CAR, chimeric antigen receptor.

1. Benmebarek M, et al. Int J Mol Sci. 2019; 20:1283. 2. Munshi NC, et al. Slides presented at ASCO Annual Meeting; May 29-31, 2020; abstract 8503. 3. Madduri D, et al. 62nd ASH Annual Meeting 2020, Presentation #177. 4. NCT03288494. Available from: <https://clinicaltrials.gov/ct2/show/NCT03288493>. Accessed February 2021. 5. NCT04093596. Available from: <https://clinicaltrials.gov/ct2/show/NCT04093596>. Accessed February 2021.

Improving communication and health literacy for minority patients



Dr Ruben Mesa (San Antonio, TX)

Are Pivotal Clinical Trials for Drugs Approved for Leukemias and Multiple Myeloma Representative of the Population at Risk?

Mycal Casey, DO, MPH¹; Lorriane Odhiambo, PhD, MPH²; Nidhi Aggarwal, BS³; Mahran Shoukier, MD⁴; Jamani Garner, BS²; K.M. Islam, MBBS, PhD, MPH^{2,3}; and Jorge E. Cortes, MD⁴

editorials

Just and Equitable Enrollment to Pivotal Clinical Trials in Hematologic Malignancies

Namrata S. Chandhok, MD¹ and Mikkael A. Sekeres, MD, MS¹

Agenda (Continued)

▶ **Cases: CLL, AML**

- 80-year-old man with chronic lymphocytic leukemia who requires treatment
- 77-year-old woman with acute myeloid leukemia on decitabine/venetoclax

▶ **Cases: Multiple myeloma**

- 75-year-old man on a clinical trial of the anti-BCMA bispecific antibody teclistamab

▶ **Patient care and clinical trial accrual when there is a language/culture barrier**

▶ **General medical oncologists reflect on post-COVID-19 virtual platforms**

▶ **Hybrid meetings**

American Oncology Network (AON) annual meeting/“Hologram” meeting moderator

▶ **Pilot project: “What I tell my patients”**

Collaborative decision-making; advantages of clinical research

Questions and Comments: Perspectives on travel for medical education; portability of audio programs



Shaachi Gupta, MD, MPH

Dr Shaachi Gupta
(Lake Worth, Florida)



Warren S Brenner, MD

Dr Warren Brenner
(Boca Raton, Florida)



Priya Rudolph, MD, PhD

Dr Priya Rudolph
(Athens, Georgia)

Agenda (Continued)

▶ **Cases: CLL, AML**

- 80-year-old man with chronic lymphocytic leukemia who requires treatment
- 77-year-old woman with acute myeloid leukemia on decitabine/venetoclax

▶ **Cases: Multiple myeloma**

- 75-year-old man on a clinical trial of the anti-BCMA bispecific antibody teclistamab

▶ **Patient care and clinical trial accrual when there is a language/culture barrier**

▶ **General medical oncologists reflect on post-COVID-19 virtual platforms**

▶ **Hybrid meetings**

American Oncology Network (AON) annual meeting/“Hologram” meeting moderator

▶ **Pilot project: “What I tell my patients”**

Collaborative decision-making; advantages of clinical research

Hybrid Meetings and Vision for the Future



Agenda (Continued)

▶ **Cases: CLL, AML**

- 80-year-old man with chronic lymphocytic leukemia who requires treatment
- 77-year-old woman with acute myeloid leukemia on decitabine/venetoclax

▶ **Cases: Multiple myeloma**

- 75-year-old man on a clinical trial of the anti-BCMA bispecific antibody teclistamab

▶ **Patient care and clinical trial accrual when there is a language/culture barrier**

▶ **General medical oncologists reflect on post-COVID-19 virtual platforms**

▶ **Hybrid meetings**

American Oncology Network (AON) annual meeting/“Hologram” meeting moderator

▶ **Pilot project: “What I tell my patients”**

Collaborative decision-making; advantages of clinical research

Questions and Comments: Perspective on being an oncologist



Dr Zanetta Lamar (Naples, Florida)

Can the Compelling Power of Virtual Education Assist in Reducing Cancer Care Disparities, Particularly in Clinical Trial Participation?

Friday, November 11, 2022

6:45 PM – 7:45 PM ET

Faculty

Shaachi Gupta, MD, MPH

Zanetta S Lamar, MD

Estelamari Rodriguez, MD, MPH

Moderator

Neil Love, MD

Thank you for joining us!

For CME credit, please fill out your CME Credit Form handout and return it to RTP staff as you leave.